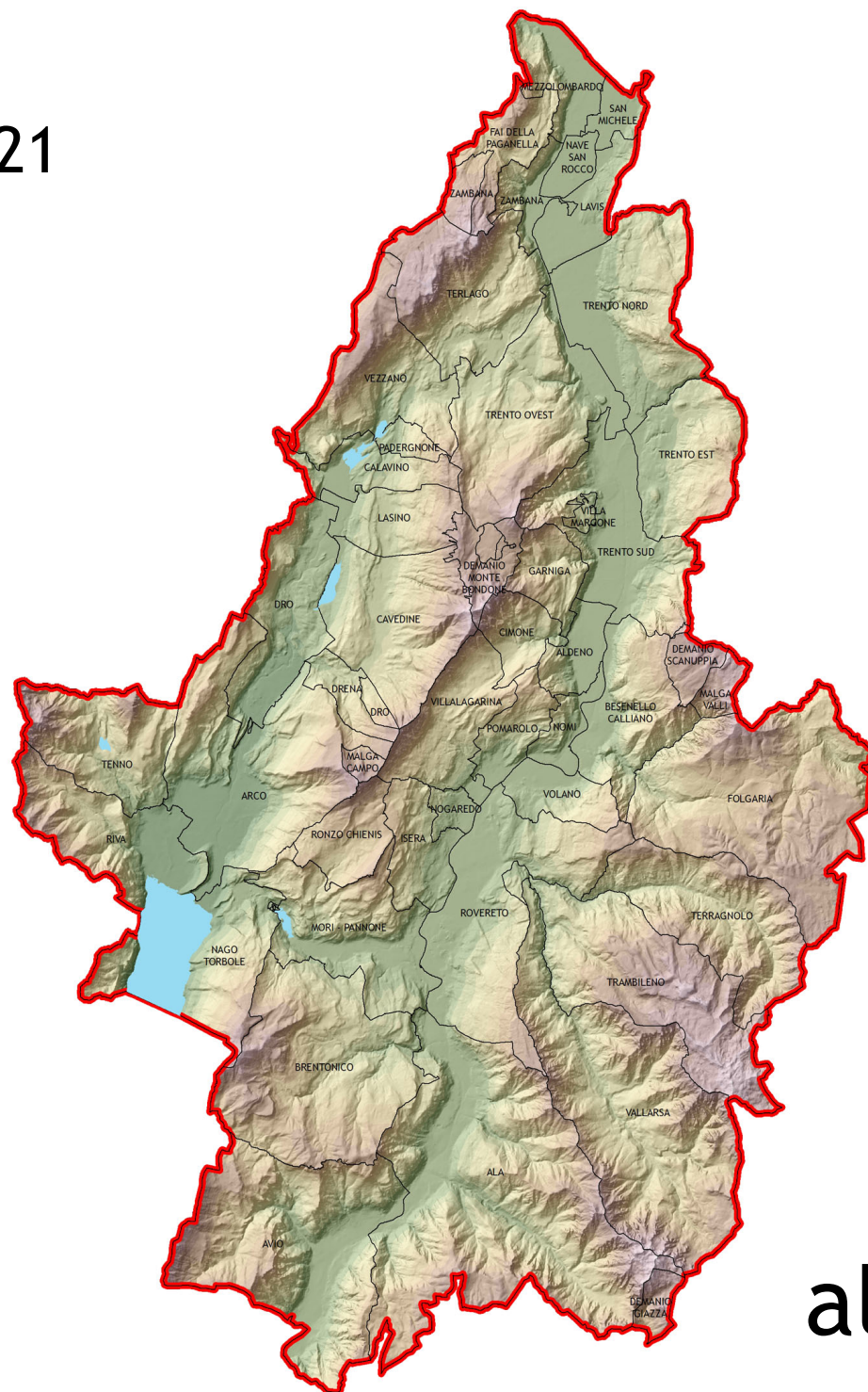


Anno 2021



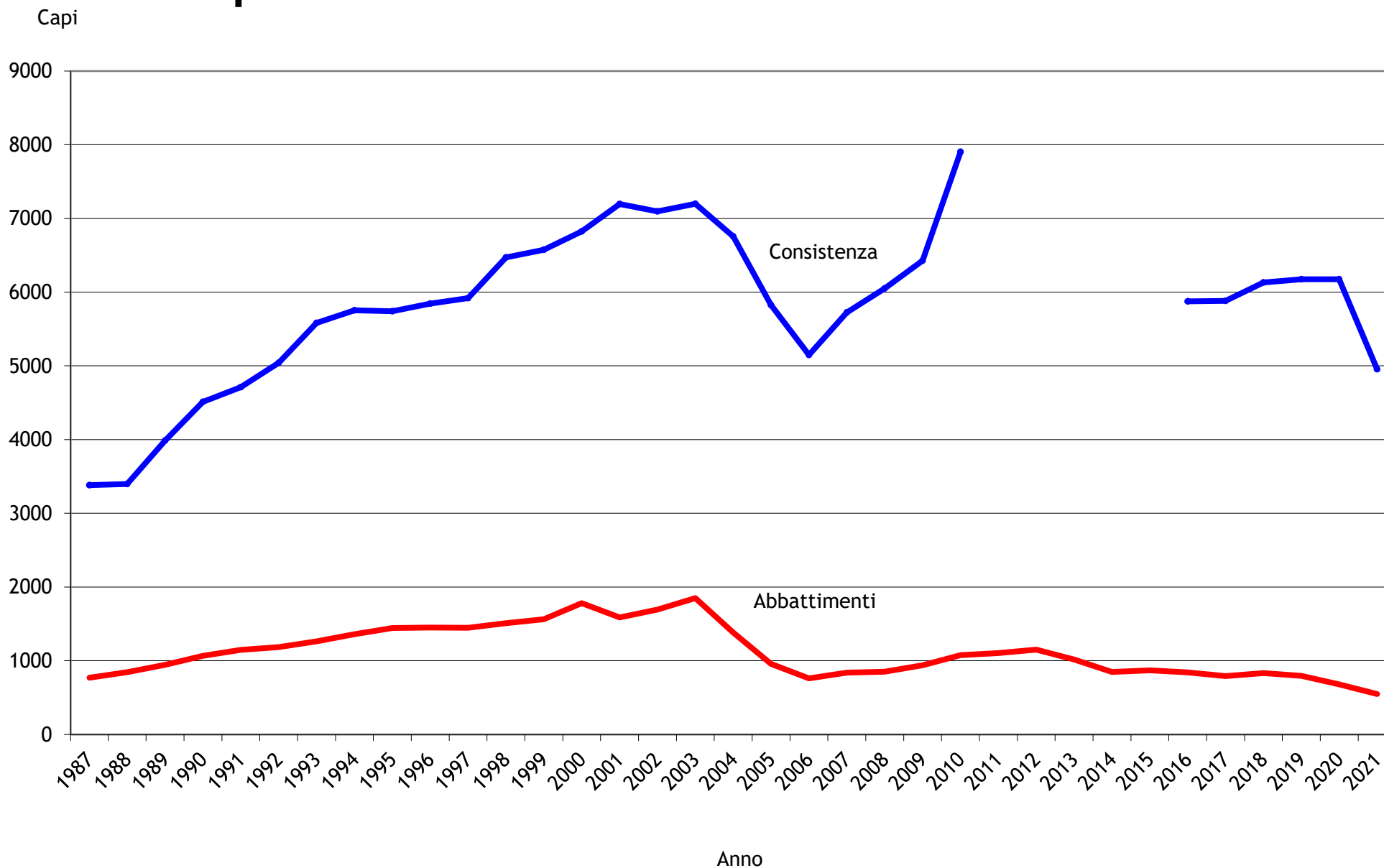
Provincia Autonoma di Trento
Servizio Faunistico



Valutazione Trofei

Vallagarina alto Garda e Trento

Capriolo - Consistenza e abbattimenti dal 1987



Vallagarina, alto Garda e Trento - Capriolo

selezione estiva 1/05/21 - 30/06/21

caccia autunnale al maschio adulto 5/09/21 - 20/10/21

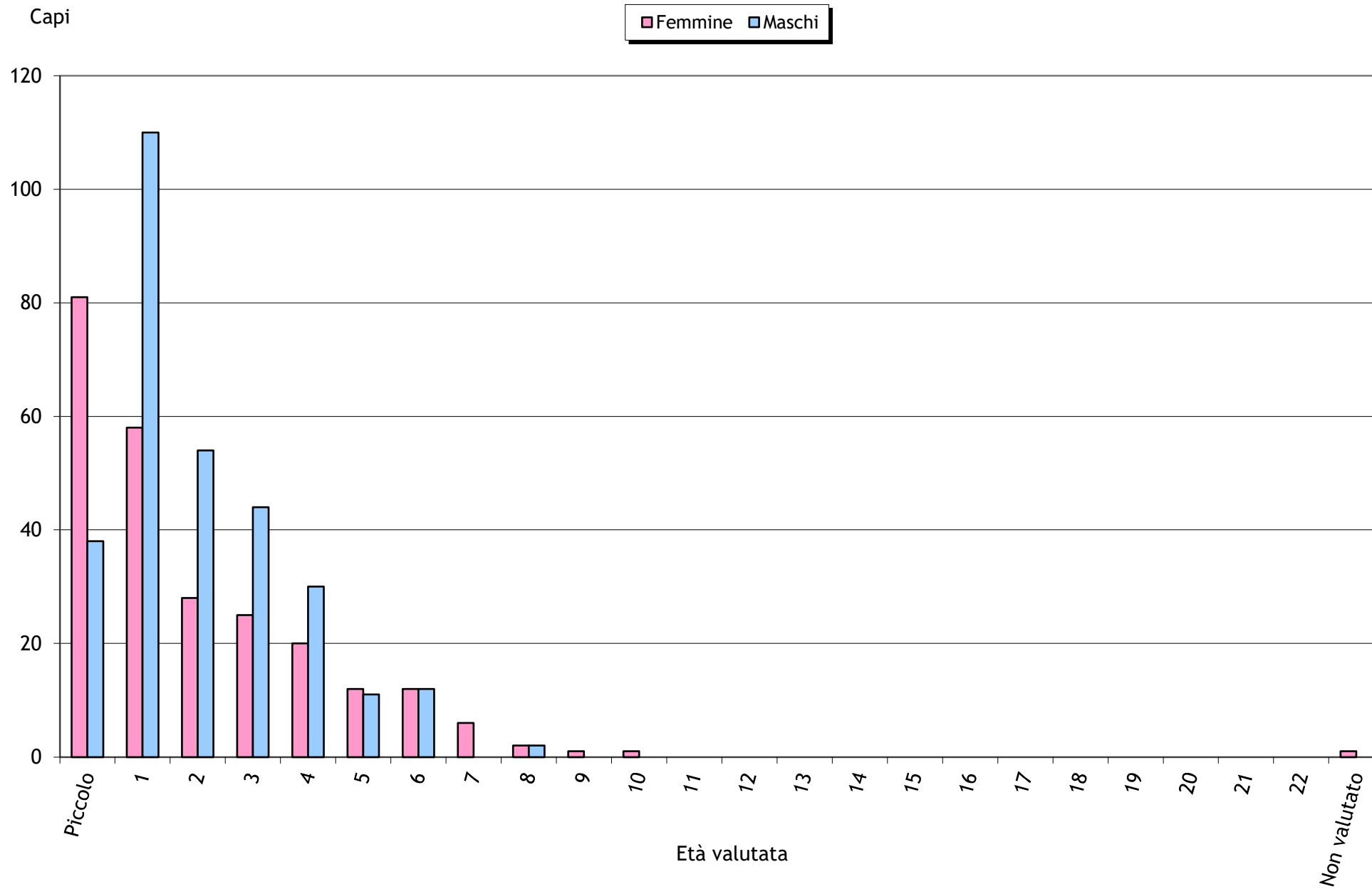
caccia autunnale alle femmine e piccoli 5/09/21 - 30/12/21

Categoria	Abbattimenti
Maschi 2° Classe	110
Maschi 1° Classe	153
Femmine	165
Piccoli	119
Non Valutati	1
Totale	548

A 3D pie chart illustrating the distribution of hunting categories. The chart is divided into four segments: Femmine (30%, pink), Maschi 1° Classe (28%, blue), Piccoli (22%, green), and Maschi 2° Classe (20%, light blue). The segments are shown in a perspective view, giving them a three-dimensional appearance.

Categoria	Abbattimenti	Percentuale
Maschi 2° Classe	110	20%
Maschi 1° Classe	153	28%
Femmine	165	30%
Piccoli	119	22%
Non Valutati	1	0%
Totale	548	100%

Capriolo - Abbattimenti per età valutata



Riserva	ASSEGNAZIONI						ABBATTIMENTI								
	Maschi			Femmine	Piccoli	Totale	Maschi				Femmine		Piccoli	Non Val.	Totale
	II	I	Totale				II	I	Totale	Età Media I^	Totale	Età Media			
ALA	2	3	5	5	2	12	1	3	4	2,3	4	2,5	1		9
ALDENO		1	1	3	1	5		1	1	3,0	1	1,0	2		4
ARCO	10	12	22	22	11	55	9	10	19	3,8	10	2,8	5		34
BRENTONICO	3	5	8	8	4	20	4	4	8	3,5	4	3,0	4		16
CALAVINO	3	4	7	7	4	18	4	3	7	3,0	6	3,8			13
CAVEDINE	5	6	11	13	7	31	4	5	9	3,6	6	4,2	5		20
CIMONE	1	2	3	4	1	8		3	3	3,0	1	2,0	3		7
DRENA	2	3	5	5	3	13	2	3	5	3,3	3	1,7	1		9
DRO	9	11	20	22	11	53	10	10	20	2,4	8	3,3	9		37
FAI DELLA PAGANELLA	2	3	5	5	2	12	2	3	5	2,7	4	1,0	2		11
FOLGARIA	2	4	6	8	4	18	2	4	6	3,5	2	2,0	3		11
GARNIGA	2	3	5	5	2	12	2	3	5	4,0	3	6,3	1		9
ISERA	2	4	6	6	3	15		5	5	3,4	6	2,7	2	1	14
LASINO	4	5	9	11	6	26	4	5	9	4,0	6	3,0	3		18
LAVIS	1	1	2	2	2	6		2	2	3,5	2	2,0	2		6
MALGA CAMPO	2	2	4	3	2	9	1	3	4	4,3	1	1,0	2		7
MALGA VALLI	1	1	2	2	1	5		1	1	3,0					1
MARGON DI RAVINA	2	1	3	2	2	7		1	1	6,0			1		2
MEZZOLOMBARDO	1	2	3	3	2	8	2	1	3	2,0	2	1,0	1		6
MORI - PANNONE	3	5	8	8	4	20	3	5	8	3,4	6	2,7	2		16
NAGO - TORBOLE	2	3	5	5	3	13	1	3	4	3,7	5	3,2	2		11
NOGAREDO		1	1	1	1	3		1	1	5,0	2	4,5			3
NOMI	1	2	3	3	1	7	1	2	3	3,0	3	3,3	1		7
PADERGNONE		1	1	2	1	4	1		1	0,0	1	1,0			2
POMAROLO	2	3	5	5	2	12	3	2	5	4,0	3	1,3	2		10
RIVA	3	4	7	10	5	22	2	4	6	4,0	5	2,6	2		13
RONZO - CHIENIS	4	6	10	10	5	25	4	6	10	2,7	3	2,3	7		20
ROVERETO	2	4	6	7	4	17	2	4	6	4,0	5	2,6	2		13

Riserva	ASSEGNAZIONI						ABBATTIMENTI								
	Maschi			Femmine	Piccoli	Totale	Maschi				Femmine		Piccoli	Non Val.	Totale
	II	I	Totale				II	I	Totale	Età Media I [^]	Totale	Età Media			
S. MICHELE ALL'ADIGE	1	1	2	2	2	6	2		2	1,0	1	6,0	2		5
TENNO	2	4	6	6	3	15	2	4	6	4,0	5	3,0	2		13
TERLAGO	7	8	15	15	8	38	5	10	15	3,1	10	2,6	8		33
TERRAGNOLO	1	1	2	2	1	5	1	1	2	4,0	1	2,0			3
TRENTO EST	4	6	10	10	6	26	4	6	10	2,5	5	1,6	4		19
TRENTO NORD	5	7	12	12	6	30	8	4	12	2,0	5	2,6	9		26
TRENTO OVEST	10	12	22	22	12	56	11	10	21	2,8	10	3,7	7		38
TRENTO SUD	3	4	7	7	4	18		6	6	3,2	4	3,5	2		12
VALLARSA	1	1	2	4	2	8	1	1	2	2,0	4	2,3			6
VEZZANO	6	7	13	14	8	35	7	6	13	3,5	9	3,6	12		34
VILLALAGARINA	2	4	6	6	3	15		4	4	4,0	4	3,5	2		10
VOLANO	2	3	5	5	2	12	2	2	4	3,0	2	4,0	2		8
ZAMBANA	2	3	5	5	2	12	3	2	5	3,0	3	1,7	4		12
Totale	117	163	280	297	155	732	110	153	263	3,2	165	2,9	119	1	548

FEMMINA

Numero di capi con relativo peso medio per età valutata

Riserva	Picc.	1	2	3	4	5	6	7	8	9	10	11	12	13	14	15	16	17	18	19	20	21	22	23	24	25	NV	Tot.
ALA		1 16,0		3 15,8																								4 15,9
ALDENO		1 10,5	1 16,9																									2 13,7
ARCO		4 9,9	2 17,5	4 15,7	1 14,5	1 14,5	1 14,0	1 17,0																				14 14,1
BRENTONICO		4 11,0		2 14,5		2 15,5																						8 13,0
CALAVINO			1 17,0	1 14,0	2 15,6		1 16,0		1 16,0																			6 15,7
CAVEDINE		2 10,0	1 16,0		1 15,0	1 14,0	1 17,0	2 14,0																				8 13,8
CIMONE		1 13,0		1 18,0																								2 15,5
DRENA		1 9,0	1 16,0	2 16,0																								4 14,3
DRO		8 11,1	3 15,3		1 17,0	2 15,5	1 14,0		1 17,0																			16 13,4
FAI DELLA PAGANELLA		2 10,5	4 14,6																									6 13,3
FOLGARIA		1 12,0	1 19,0		1 14,0																							3 15,0
GARNIGA				1 10,0				1 16,0		1 15,0																		3 13,7
ISERA		1 11,0	2 15,5	1 14,0	1 18,0	1 23,0	1 18,0																				1 14,0	8 16,1
LASINO		3 10,7	1 14,0	1 15,0	3 17,0		1 17,0																					9 14,3
LAVIS		1 8,0	1 16,0		1 14,0																							3 12,7
MALGA CAMPO		1 11,0	1 15,0																									2 13,0
MARGON DI RAVINA		1																										1
MEZZOLOMBARDO		1 11,0	2 14,8																									3 13,6
MORI - PANNONE		2 12,5	1 17,0	3 14,9		1 18,0	1 19,0																					8 15,5
NAGO - TORBOLE		2 11,0	2 18,5		1 16,0		1 14,0	1 18,0																				7 15,3
NOGAREDO						1 18,0	1 18,0																					2 18,0
NOMI		1 13,0	1 21,0		1 22,0		1 20,0																					4 19,0
PADERGNONE			1 14,0																									1 14,0
POMAROLO		1 8,0	2 18,0	1 16,0																								4 15,0
RIVA			3 12,8		1 17,0			1 13,2																				5 13,7

FEMMINA

Numero di capi con relativo peso medio per età valutata

Riserva	Picc.	1	2	3	4	5	6	7	8	9	10	11	12	13	14	15	16	17	18	19	20	21	22	23	24	25	NV	Tot.
RONZO - CHIENIS	6 13,5		2 18,0	1 16,0																								9 14,8
ROVERETO	1 12,0	2 19,5		1 13,7	2 19,0																							6 17,1
S. MICHELE ALL'ADIGE	1 9,0						1 18,0																					2 13,5
TENNO		3 11,3					2 15,8																					5 13,1
TERLAGO	6 9,9	4 14,9	3 14,7			2 15,3	1 19,0																					16 13,3
TERRAGNOLO			1 12,0																									1 12,0
TRENTO EST	1 9,0	3 15,3	1 13,0	1 17,0																								6 14,2
TRENTO NORD	7 9,3	1 15,0	1 16,0	2 16,5	1 14,0																							12 11,9
TRENTO OVEST	6 11,4	3 15,0	1 14,0	1 18,0	2 18,5	1 20,0		1 20,0		1 13,0																		16 14,7
TRENTO SUD	1 16,0	1 16,0	1 16,5		1 17,5			1 15,0																				5 16,2
VALLARSA		2 16,3		1 18,0	1 18,0																							4 17,1
VEZZANO	8 9,4	3 12,3	1 16,5		1 18,5	2 16,5	1 15,5	1 14,0																				17 12,3
VILLALAGARINA	1 10,0	2 13,5		1 14,0						1 18,0																		5 13,8
VOLANO	2 15,0			2 15,3																								4 15,2
ZAMBANA	3 12,8	2 16,3		1 16,7																								6 14,6
Numero totale	81	58	28	25	20	12	12	6	2	1	1																	1 247
Peso medio totale	10,9	15,4	15,1	16,4	16,9	16,5	16,7	15,9	17,0	13,0	15,0																	14,0 14,2

MASCHIO

Numero di capi con relativo peso medio per età valutata

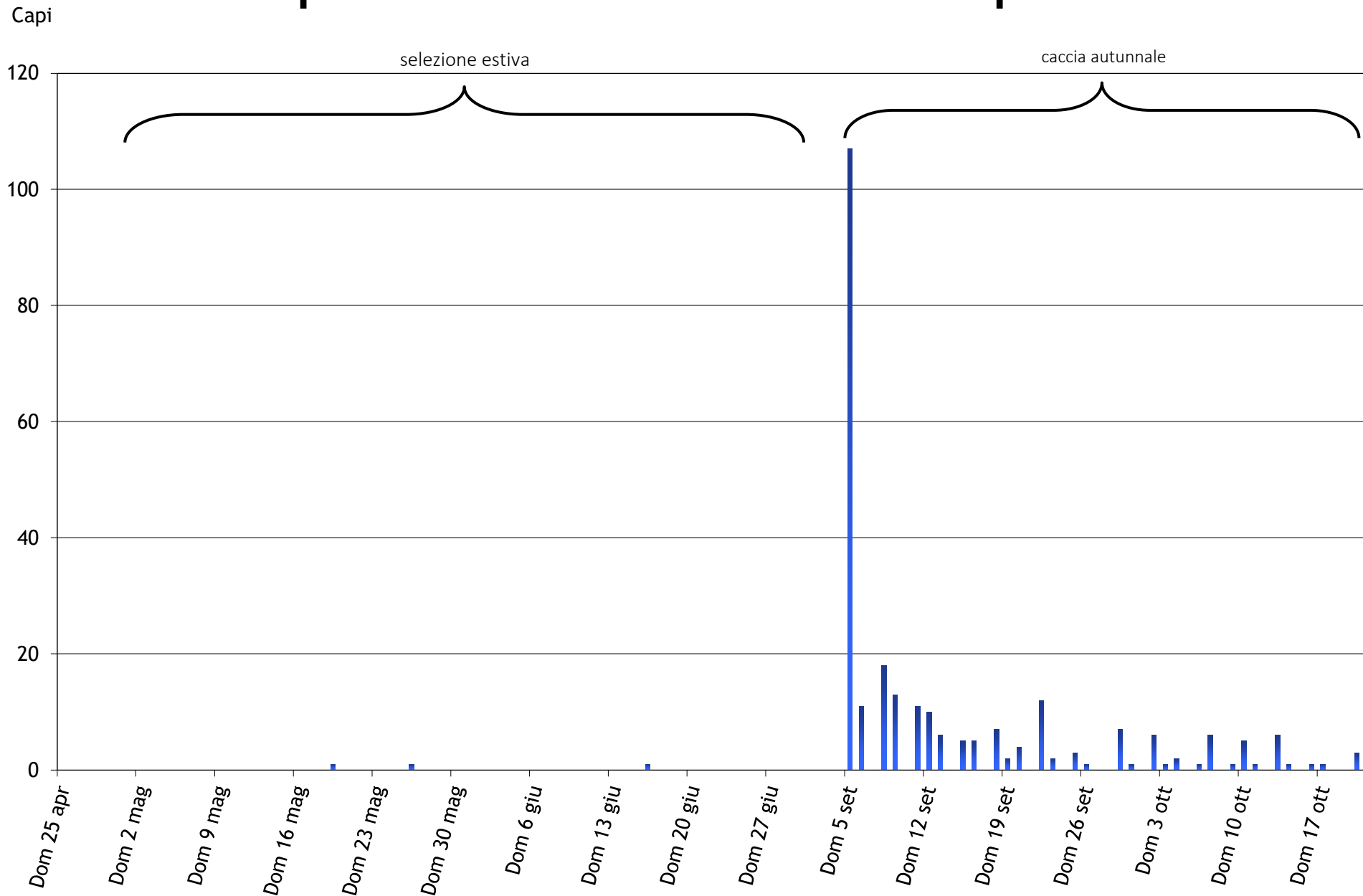
Riserva	Picc.	1	2	3	4	5	6	7	8	9	10	11	12	13	14	15	16	17	18	19	20	21	22	23	24	25	NV	Tot.
ALA	1	1	2	1																								5
	12,0	14,5	18,3	18,0																								16,2
ALDENO	1			1																								2
	10,0			20,0																								15,0
ARCO	1	9	3	1	4	1			1																			20
	8,5	16,1	16,5	17,3	17,4	16,0			19,0																			16,2
BRENTONICO		4	1	2			1																					8
		16,0	17,0	21,5			17,0																					17,6
CALAVINO		4	1	1	1																							7
		16,5	18,0	20,0	17,0																							17,3
CAVEDINE	3	4	1	2	1		1																					12
	7,7	16,0	20,0	16,0	14,0		20,0																					14,4
CIMONE	2		1	1	1																							5
	13,0		18,0	20,0	21,0																							17,0
DRENA		2		2	1																							5
		13,0		18,0	18,0																							16,0
DRO	1	10	7	2	1																							21
	8,5	14,0	17,9	21,0	17,0																							15,8
FAI DELLA PAGANELLA		2	2		1																							5
		15,0	16,5		18,0																							16,2
FOLGARIA	2	2	1	1	1	1																						8
	13,3	16,8	18,0	22,5	18,0	18,8																						17,2
GARNIGA	1	2	1		1		1																					6
	9,0	16,5	18,0		17,0		15,0																					15,3
ISERA	1		2	1	1																							6
	16,0		20,0	23,0	20,0		23,2																					20,4
LASINO		4		1	3	1																						9
		18,8		21,0	22,0	21,0																						20,3
LAVIS	1		1			1																						3
	8,0		16,0			16,0																						13,3
MALGA CAMPO	1	1	1			1	1																					5
	10,5	14,0	15,0			19,0	17,5																					15,2
MALGA VALLI				1																								1
				15,3																								15,3
MARGON DI RAVINA							1																					1
MEZZOLOMBARDO		2	1																									3
		16,5	20,0																									17,7
MORI - PANNONE		3	1	1	3																							8
		18,7	21,0	22,0	20,8																							20,2
NAGO - TORBOLE		1	1	1			1																					4
		16,0	17,0	21,0			19,0																					18,3
NOGAREDO						1																						1
						16,0																						16,0
NOMI		1		2																								3
		14,5		21,8																								19,4
PADERGNONE		1																										1
		14,0																										14,0
POMAROLO	1	3	1				1																					6
	14,0	15,3	19,0				15,0																					15,7

MASCHIO

Numero di capi con relativo peso medio per età valutata

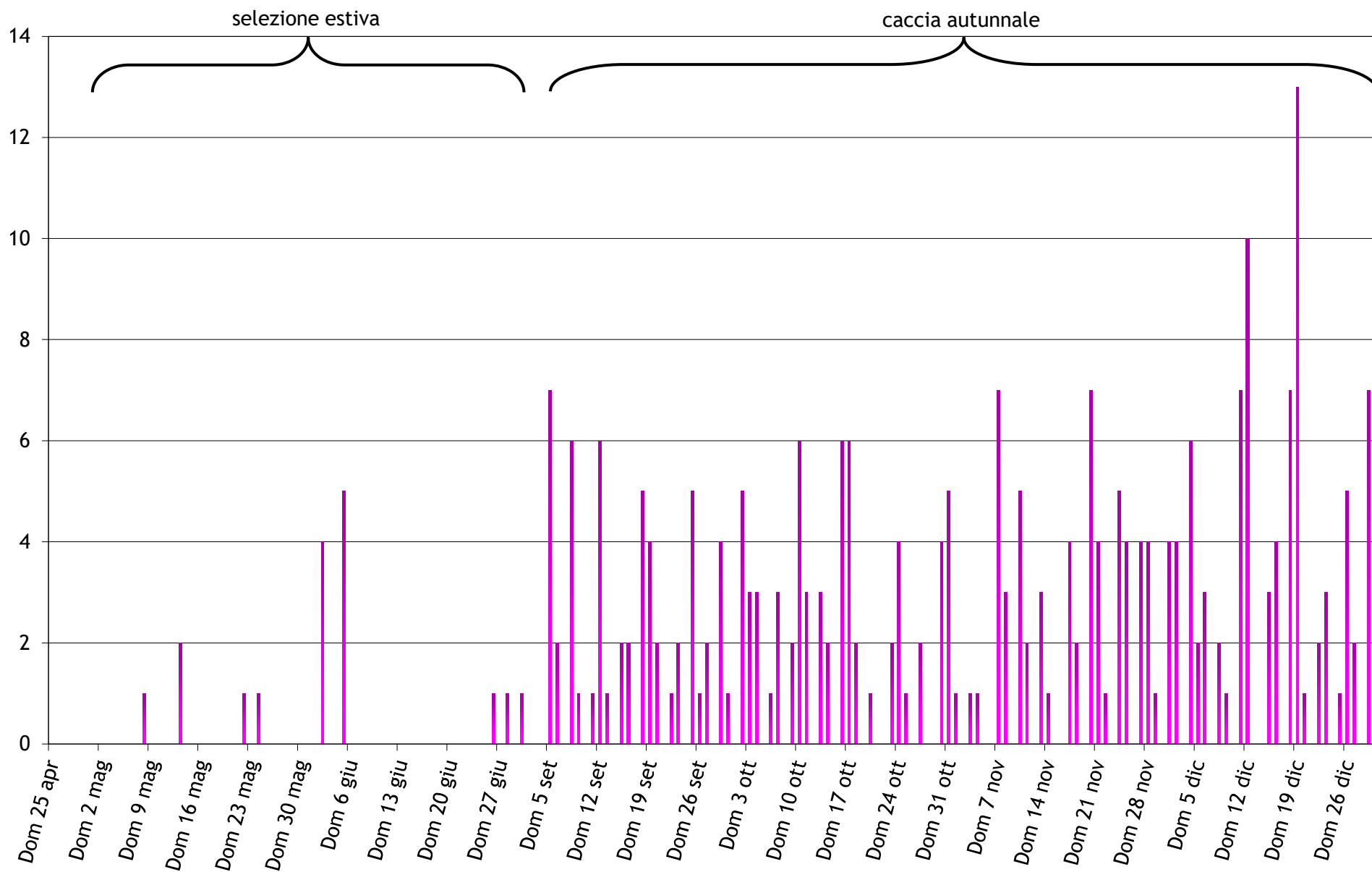
Riserva	Picc.	1	2	3	4	5	6	7	8	9	10	11	12	13	14	15	16	17	18	19	20	21	22	23	24	25	NV	Tot.
RIVA	2	2	1	1		1	1																					8
	9,8	14,0	18,5	18,5		18,5	17,0																					15,0
RONZO - CHIENIS	1	4	2	4																								11
	12,0	16,0	20,5	20,8																								18,2
ROVERETO	1	2	1		2		1																					7
	8,0	14,0	19,0		18,0		18,0																					15,6
S. MICHELE ALL'ADIGE	1	2																										3
	8,0	15,5																										13,0
TENNO	2	2		2	1		1																					8
	12,5	17,0		16,8	17,1		19,5																					16,1
TERLAGO	2	5	6		2	1	1																					17
	9,8	14,8	18,3		16,0	17,0	14,5																					15,7
TERRAGNOLO		1				1																						2
		15,0			20,0																							17,5
TRENTO EST	3	4	4	1	1																							13
	10,4	14,1	18,8	18,0	18,0																							15,3
TRENTO NORD	2	8	2	2																								14
	9,5	16,6	16,5	19,0																								15,9
TRENTO OVEST	1	11	5	3	1	1																						22
	15,0	16,5	17,8	20,0	16,5	19,0																						17,3
TRENTO SUD	1		1	3	2																							7
	14,5		19,0	19,8	18,5																							18,6
VALLARSA		1	1																									2
		19,0	19,2																									19,1
VEZZANO	4	7	1	3		2																						17
	9,0	15,9	15,5	17,0		19,5																						14,9
VILLALAGARINA	1		1	2						1																		5
	12,0		18,0	21,0					18,0																			18,0
VOLANO		2		2																								4
		18,0		18,0																								18,0
ZAMBANA	1	3	1		1																							6
	13,2	14,3	19,0		19,0																							15,7
Numero totale	38	110	54	44	30	11	12		2																			301
Peso medio totale	10,7	15,8	18,1	19,5	18,5	18,2	17,8		18,5																			16,5

Capriolo - Abbattimenti maschi per data

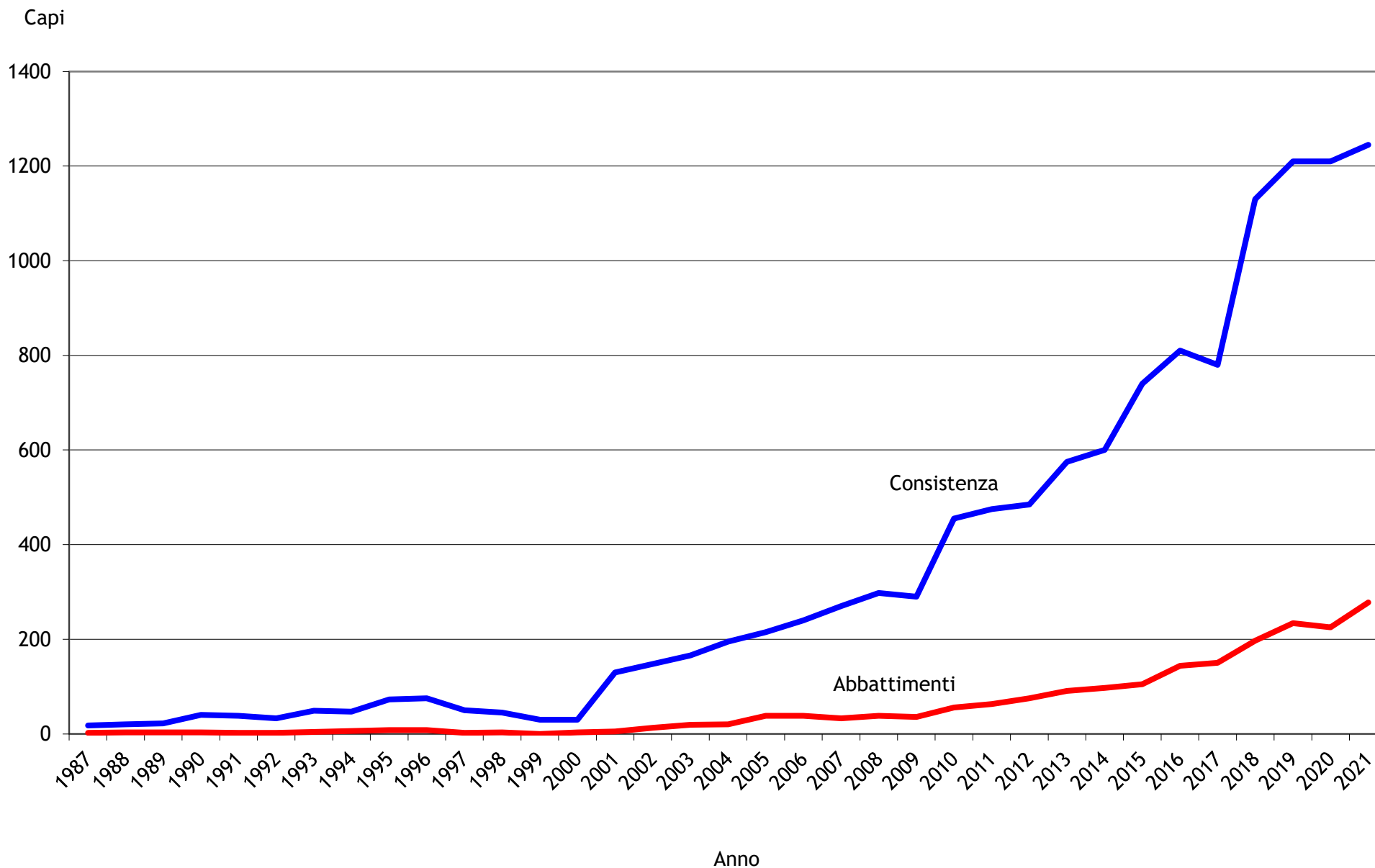


Capriolo - Abbattimenti femmine e piccoli per data

Capi



Cervo - Consistenza e abbattimenti dal 1987



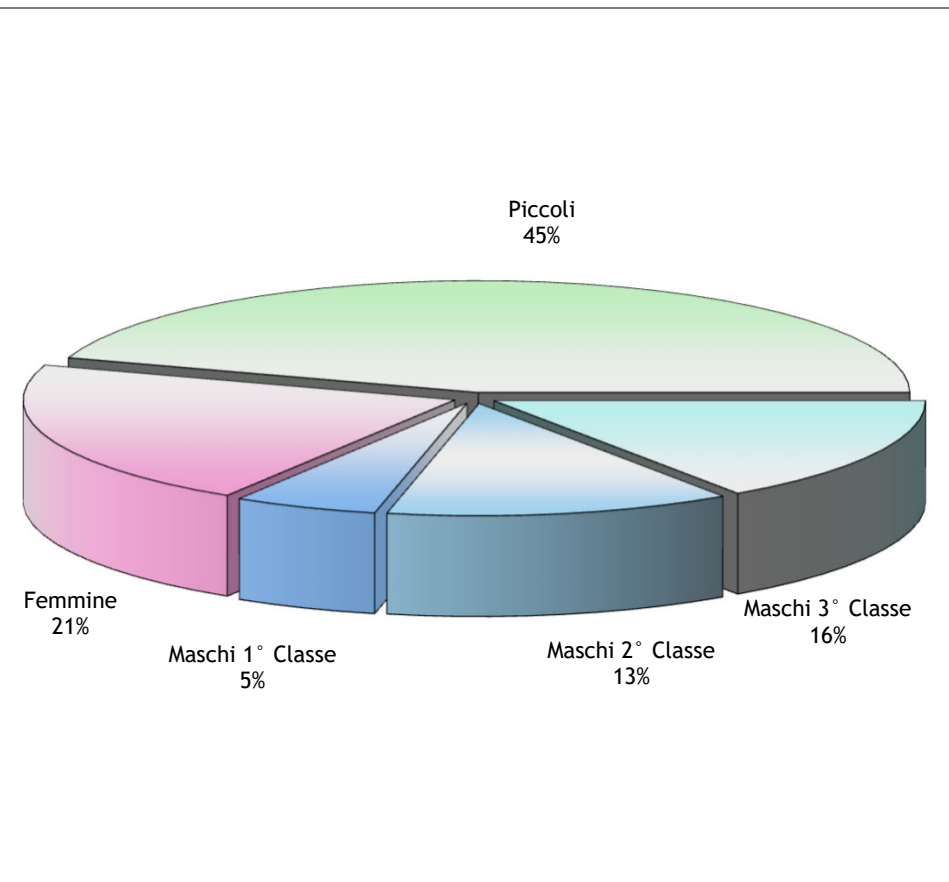
Vallagarina, alto Garda e Trento - Cervo

selezione estiva 1/05/21 - 30/06/21

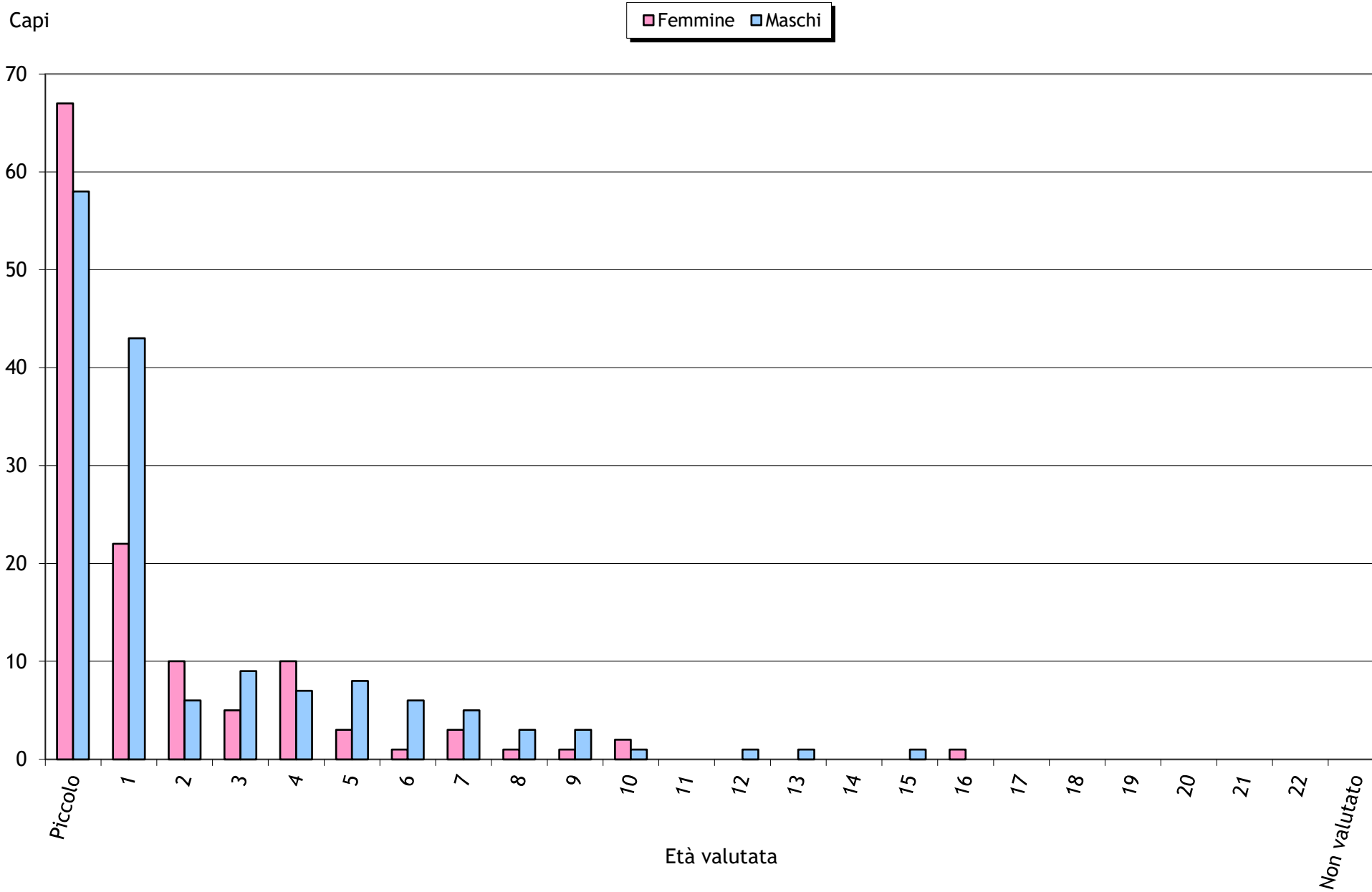
caccia autunnale senza aree bramito 5/09/21 - 19/09/21 11/10/21 - 30/12/21

caccia autunnale con aree bramito 5/09/21 - 30/12/21

Categoria	Abbattimenti
Maschi 3° Classe	43
Maschi 2° Classe	36
Maschi 1° Classe	15
Femmine	59
Piccoli	125
Non Valutati	
Totale	278



Cervo - Abbattimenti per età valutata



Distretto Faunistico	ASSEGNAZIONI								ABBATTIMENTI									
	Maschi					Femmine e Piccoli		Totale	Maschi				Femmine		Piccoli	Non Val.	Totale	
	III	II-I	II	I	Totale	Fem	Pic		III	II	I	Totale Età Media	Totale Età Media					
ALA - Destra Adige	1	2			3	2	3	8	1		2	3	6,0	3	4,3	2		8
ALA - Sinistra Adige	6		4	5	15	11	15	41	6	4	5	15	4,6	11	3,8	14		40
ALDENO						1		1								1		1
ARCO - Destra Sarca	1	1			2	1		3	1	1		2	3,0	1	1,0			3
ARCO - Sinistra Sarca						1		1										
AVIO - Destra Adige	1	2			3	4	4	11	2	1		3	2,0	2	4,0	6		11
AVIO - Sinistra Adige	1		1	1	3	2	2	7		1	1	2	10,5	2	3,5	2		6
BESENELLO - CALLIANO	1		2		3	2	4	9	2	1		3	2,0	2	1,0	4		9
BRENTONICO	1	1			2	2	2	6	1	1		2	2,5	1	4,0	1		4
CALAVINO	1				1	1	2	4	1			1	1,0	1	1,0	1		3
CAVEDINE		1			1	1	1	3		1		1	5,0			2		3
CIMONE / GARNIGA / POMAROLO / VILLALAGARINA	1	1			2	1	2	5		1		1	3,0	1	1,0	2		4
DRENA	1				1		1	2	1			1	1,0					1
DRO	1				1	1		2								1		1
FAI DELLA PAGANELLA / MEZZOLOMBARDO / ZAMBANA	1	2			3	3	3	9	2	1		3	2,3	2	1,0	4		9
FOLGARIA	2		1	1	4	3	4	11	2	1	1	4	3,8	1	5,0	4		9
ISERA / NOGAREDO						1	1	2										
LASINO		1			1	1	1	3		1		1	3,0			2		3
LAVIS / S. MICHELE ALL'ADIGE		1			1	3		4		1		1	6,0	1	3,0	1		3
MALGA CAMPO								1								1		1
MORI - PANNONE - Baldo						1		1										
MORI - PANNONE - Val di Gresta						1		1										
NAGO - TORBOLE	1	1			2	1	1	4	1	1		2	2,0			1		3
NOMI						1		1										
PADERGNONE						1		1										
RIVA	1	1			2	1	2	5		1		1	2,0			3		4
RONZO - CHIENIS						1		1										
ROVERETO	1				1	2	2	5	1			1	1,0			4		5

Distretto Faunistico	ASSEGNAZIONI							ABBATTIMENTI										
	Maschi					Femmine e Piccoli		Totale	Maschi				Femmine		Piccoli	Non Val.	Totale	
	III	II-I	II	I	Totale	Fem	Pic		III	II	I	Totale Età Media	Totale Età Media					
TENNO - Cadria						1		1					1	10,0			1	
TENNO - Misone						1	1	2					1	4,0	1		2	
TERLAGO	4	5			9	11	12	32	4	3	1	8	3,4	4	1,8	19		31
TERRAGNOLO	5		3	2	10	7	10	27	5	4	1	10	2,6	7	5,1	10		27
TRAMBILENO	2		2	1	5	4	5	14	2	3		5	2,2	4	2,8	5		14
TRENTO EST		1			1	1	1	3		1		1	2,0					1
TRENTO NORD	2	1			3	2	2	7	2	1		3	2,0	1	1,0	3		7
TRENTO OVEST	1				1	1	3	5		1		1	3,0	2	2,5	2		5
TRENTO SUD - Destra Adige						1		1										
TRENTO SUD - Sinistra Adige		1			1	1	1	3			1	1	7,0	1	6,0	1		3
VALLARSA	6		4	4	14	12	14	40	5	4	3	12	4,1	7	2,0	19		38
VEZZANO	3	2			5	5	6	16	3	2		5	2,2	3	3,0	8		16
VOLANO	1				1		1	2	1			1	1,0			1		2
Totale	46	24	17	14	101	97	106	305	43	36	15	94	3,4	59	3,3	125		278

FEMMINA

Numero di capi con relativo peso medio per età valutata

Riserva	Picc.	1	2	3	4	5	6	7	8	9	10	11	12	13	14	15	16	17	18	19	20	21	22	23	24	25	NV	Tot.	
ALA - Destra Adige	1 38,0	1 65,0	1 65,0								1 90,0																	4 64,5	
ALA - Sinistra Adige	7 41,7	2 53,5	3 70,3	1 75,0	1 70,0	1 79,5		2 69,5	1 72,0																				18 58,1
ARCO - Destra Sarca		1 67,0																											1 67,0
AVIO - Destra Adige	3 38,2				2 66,5																								5 49,5
AVIO - Sinistra Adige	2 44,5		1 79,0			1 85,0																							4 63,3
BESENELLO - CALLIANO	2 38,9	2 58,5																											4 48,7
BRENTONICO	1 30,0				1 71,0																								2 50,5
CALAVINO	1 29,6	1 57,0																											2 43,3
CAVEDINE	2 38,5																												2 38,5
CIMONE / GARNIGA / POMAROLO / VILLALAGARINA	1 41,0	1 50,0																											2 45,5
DRO	1 34,5																												1 34,5
FAI DELLA PAGANELLA / MEZZOLOMBARDO / ZAMBANA	1 33,0	2 64,5																											3 54,0
FOLGARIA	2 45,0					1 70,0																							3 53,3
LASINO	1 45,0																												1 45,0
LAVIS / S. MICHELE ALL'ADIGE				1 86,0																									1 86,0
RIVA	2 36,0																												2 36,0
ROVERETO	2 53,0																												2 53,0
TENNO - Cadria											1 74,0																		1 74,0
TENNO - Misone	1 42,0				1 82,0																								2 62,0
TERLAGO	10 37,7	2 64,0	1 70,0	1 70,0																									14 46,1
TERRAGNOLO	3 39,0	2 63,0	1 73,0	1 68,0	1 90,0					1 58,0							1 56,0												10 58,8
TRAMBILENO	4 43,8	1 56,0	1 76,6		2 81,9																								8 58,9

FEMMINA

Numero di capi con relativo peso medio per età valutata

Riserva	Picc.	1	2	3	4	5	6	7	8	9	10	11	12	13	14	15	16	17	18	19	20	21	22	23	24	25	NV	Tot.
TRENTO NORD	1 38,0	1 75,0																										2 56,5
TRENTO OVEST		1 62,0			1 80,0																							2 71,0
TRENTO SUD - Sinistra Adige	1 30,0						1 71,0																					2 50,5
VALLARSA	12 38,1	3 58,0	2 63,5	1 70,0	1 74,0																							19 47,5
VEZZANO	5 34,6	2 53,0							1 66,0																			8 43,1
VOLANO	1 41,0																											1 41,0
Numero totale	67	22	10	5	10	3	1	3	1	1	2						1											126
Peso medio totale	39,1	60,0	70,2	73,8	76,4	78,2	71,0	68,3	72,0	58,0	82,0						56,0											52,7

MASCHIO

Numero di capi con relativo peso medio per età valutata

Riserva	Picc.	1	2	3	4	5	6	7	8	9	10	11	12	13	14	15	16	17	18	19	20	21	22	23	24	25	NV	Tot.
ALA - Destra Adige	1 46,0	1 73,0							1 143,0	1 112,0																	4 93,5	
ALA - Sinistra Adige	7 44,3	6 66,5		1	2 154,5		1	1 132,0	1 167,0	1 150,0	1 166,0		1 149,0														22 89,1	
ALDENO	1 52,0																										1 52,0	
ARCO - Destra Sarca		1 75,0				1																					2 75,0	
AVIO - Destra Adige	3 40,7	2 64,5			1 82,0																						6 55,5	
AVIO - Sinistra Adige							1 109,0									1 119,0											2 114,0	
BESENELLO - CALLIANO	2 28,5	2 68,5			1 92,5																						5 57,3	
BRENTONICO		1 113,0			1 74,0																						2 93,5	
CALAVINO		1 63,0																									1 63,0	
CAVEDINE						1 126,0																					1 126,0	
CIMONE / GARNIGA / POMAROLO / VILLALAGARINA	1 39,0			1 120,0																							2 79,5	
DRENA		1 68,0																									1 68,0	
FAI DELLA PAGANELLA / MEZZOLOMBARDO / ZAMBANA	3 45,3	2 80,0			1 94,0																						6 65,0	
FOLGARIA	2 41,0	2 75,5			1 130,0					1 132,0																	6 82,5	
LASINO	1 38,0			1 113,0																							2 75,5	
LAVIS / S. MICHELE ALL'ADIGE	1 40,0						1 145,0																				2 92,5	
MALGA CAMPO	1 47,0																										1 47,0	
NAGO - TORBOLE	1 40,0	1 70,0		1 125,0																							3 78,3	
RIVA	1 37,0		1 77,5																								2 57,3	
ROVERETO	2 46,0	1 82,0																									3 58,0	
TERLAGO	9 40,2	4 74,8				2 121,0	1 123,0	1 187,0																			17 71,4	
TERRAGNOLO	7 40,6	5 74,8	1 100,0	2 131,5		1 153,0				1 130,0																	17 76,7	

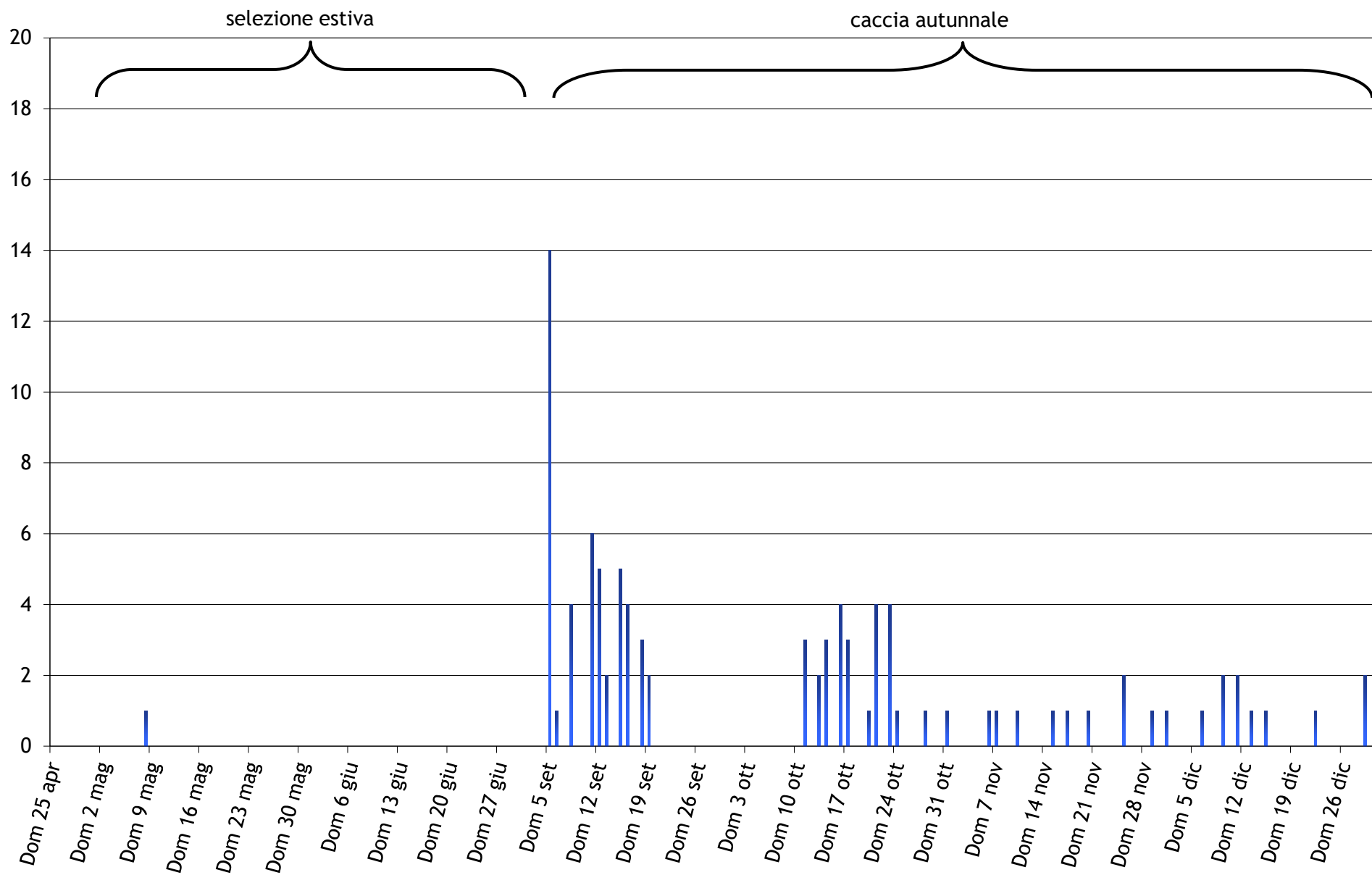
MASCHIO

Numero di capi con relativo peso medio per età valutata

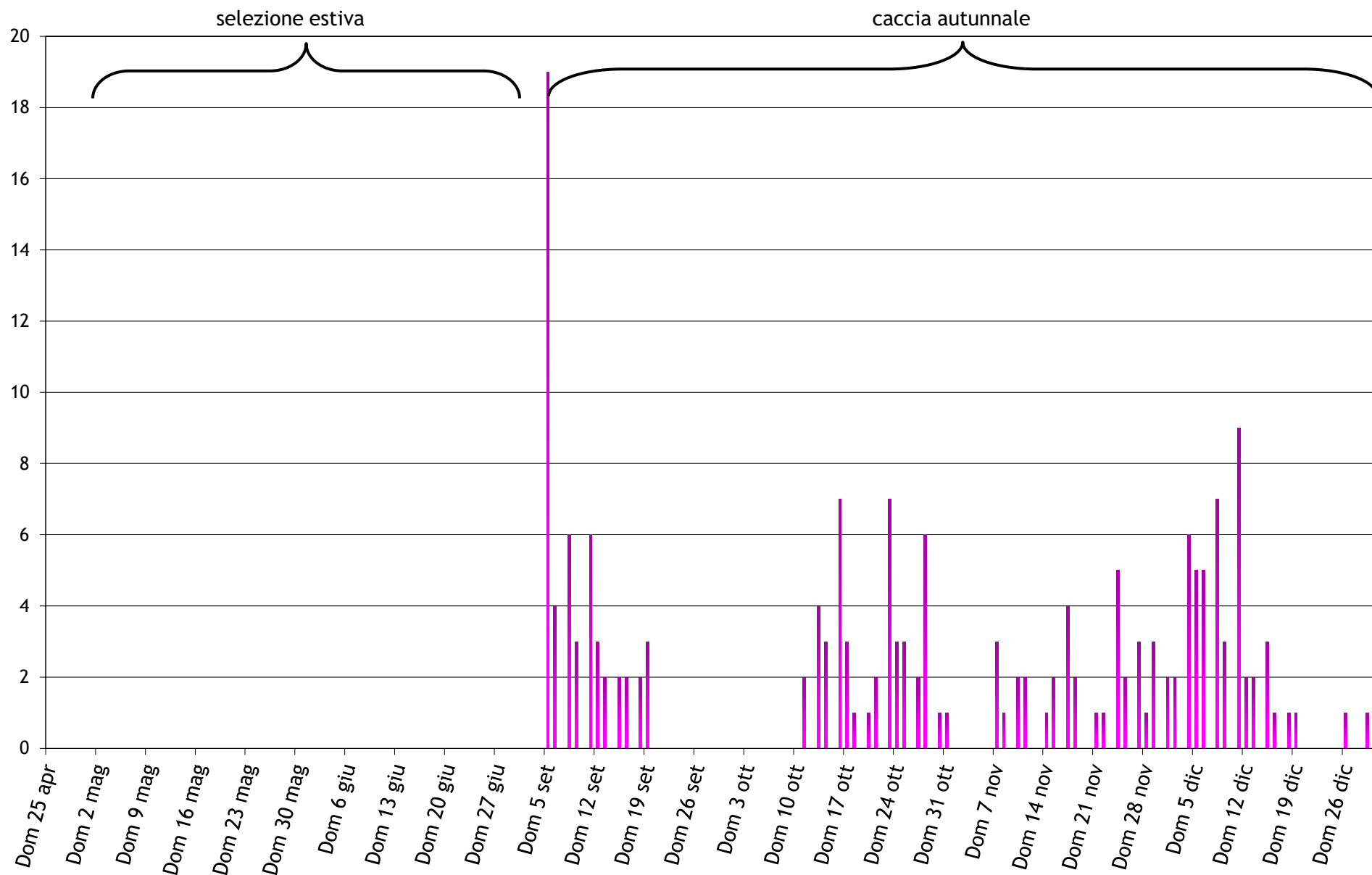
Riserva	Picc.	1	2	3	4	5	6	7	8	9	10	11	12	13	14	15	16	17	18	19	20	21	22	23	24	25	NV	Tot.
TRAMBILENO	1 50,2	2 81,0	2 104,3			1 123,1																						6 90,6
TRENTO EST			1 96,0																									1 96,0
TRENTO NORD	2 45,0	2 83,0			1 150,0																							5 81,2
TRENTO OVEST	2 40,0			1 98,0																								3 59,3
TRENTO SUD - Sinistra Adige								1 168,0																				1 168,0
VALLARSA	7 44,9	5 73,8		2 103,5		1 116,0	1 143,0	2 157,5						1 130,0														19 83,9
VEZZANO	3 33,0	3 68,0	1 84,0				1 153,0																					8 67,5
VOLANO		1 68,0																										1 68,0
Numero totale	58	43	6	9	7	8	6	5	3	3	1		1	1		1												152
Peso medio totale	41,7	73,5	94,3	115,8	119,6	122,0	134,6	160,4	146,7	131,3	166,0		149,0	130,0		119,0												78,2

Cervo - Abbattimenti maschi per data

Capi

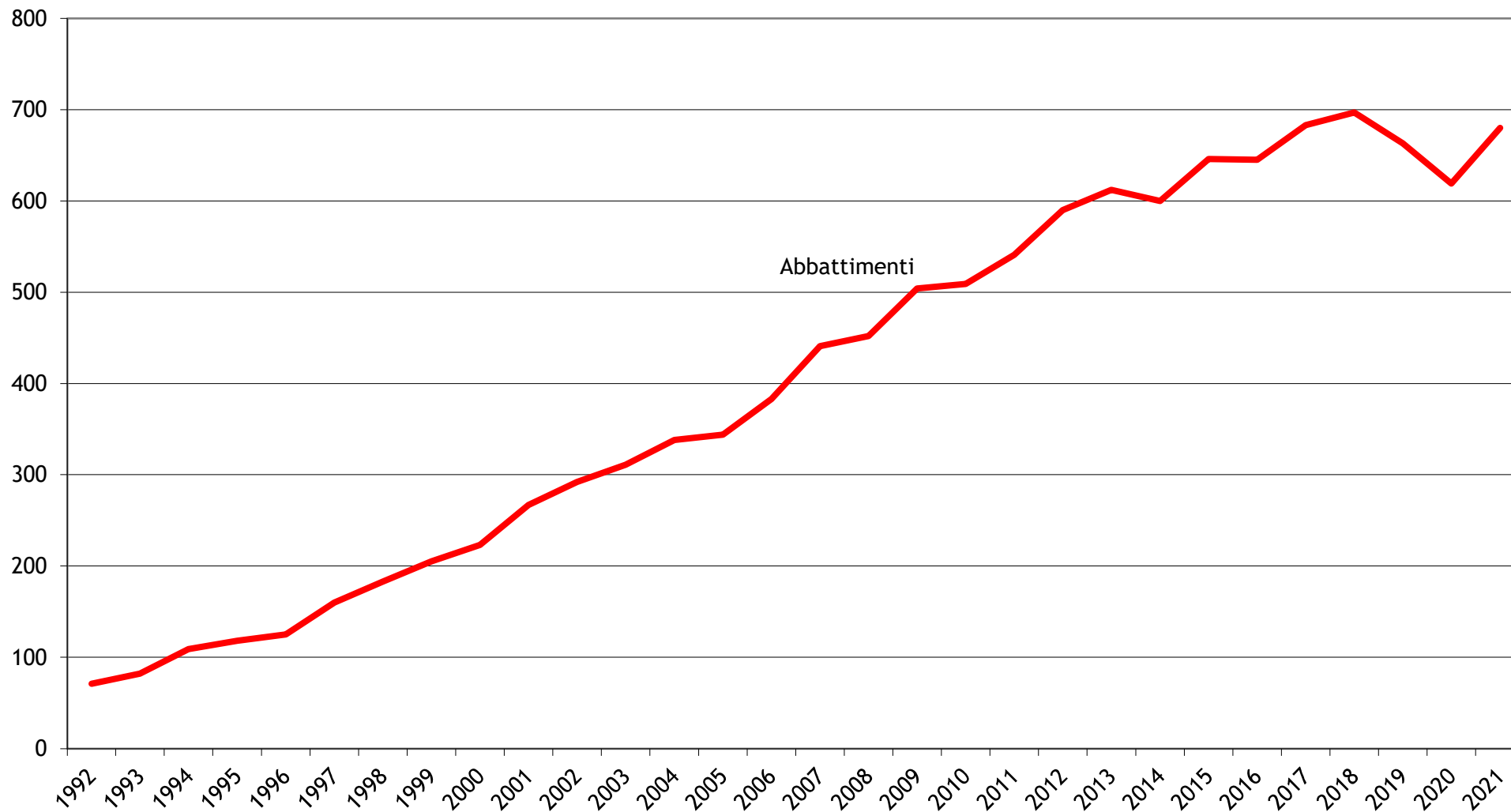


Cervo - Abbattimenti femmine e piccoli per data



Camoscio - abbattimenti dal 1992

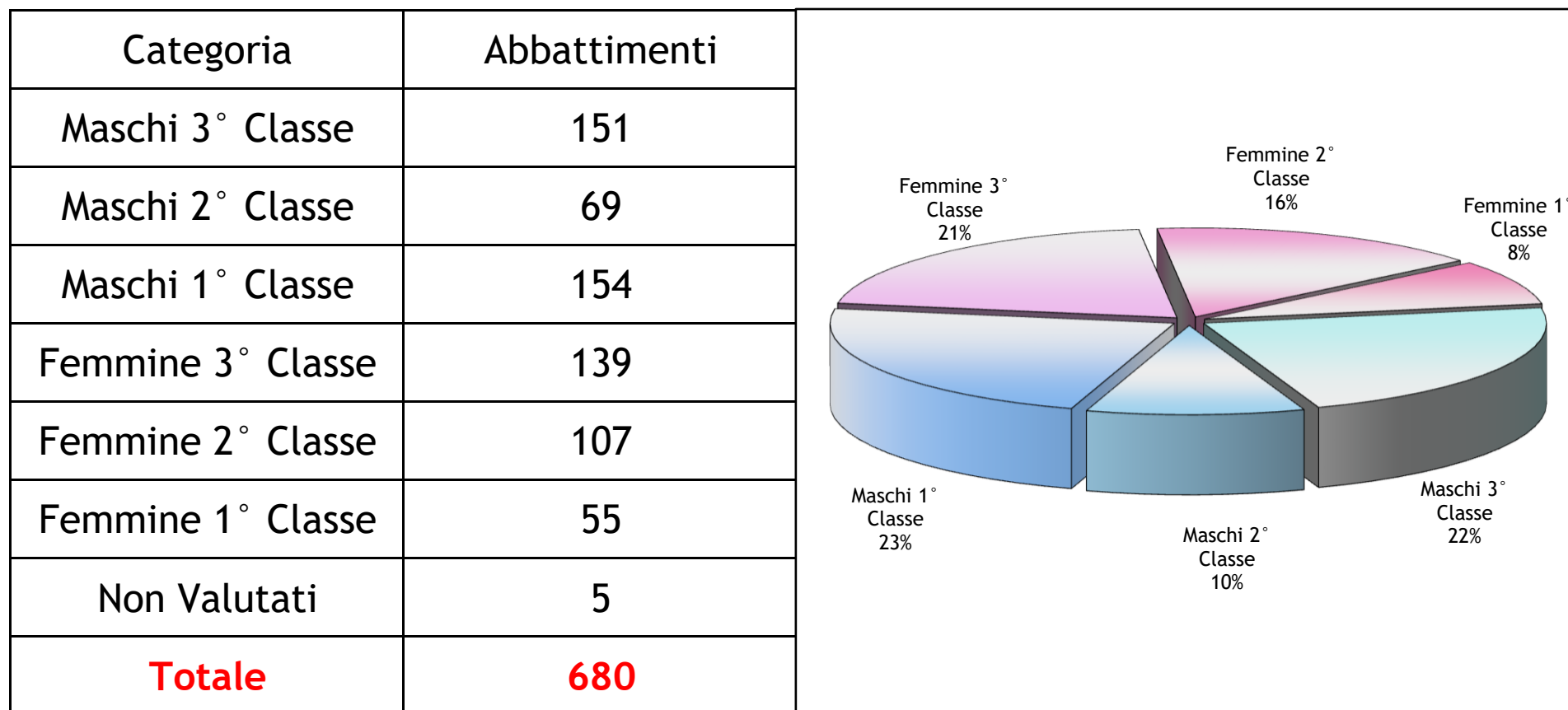
Capi



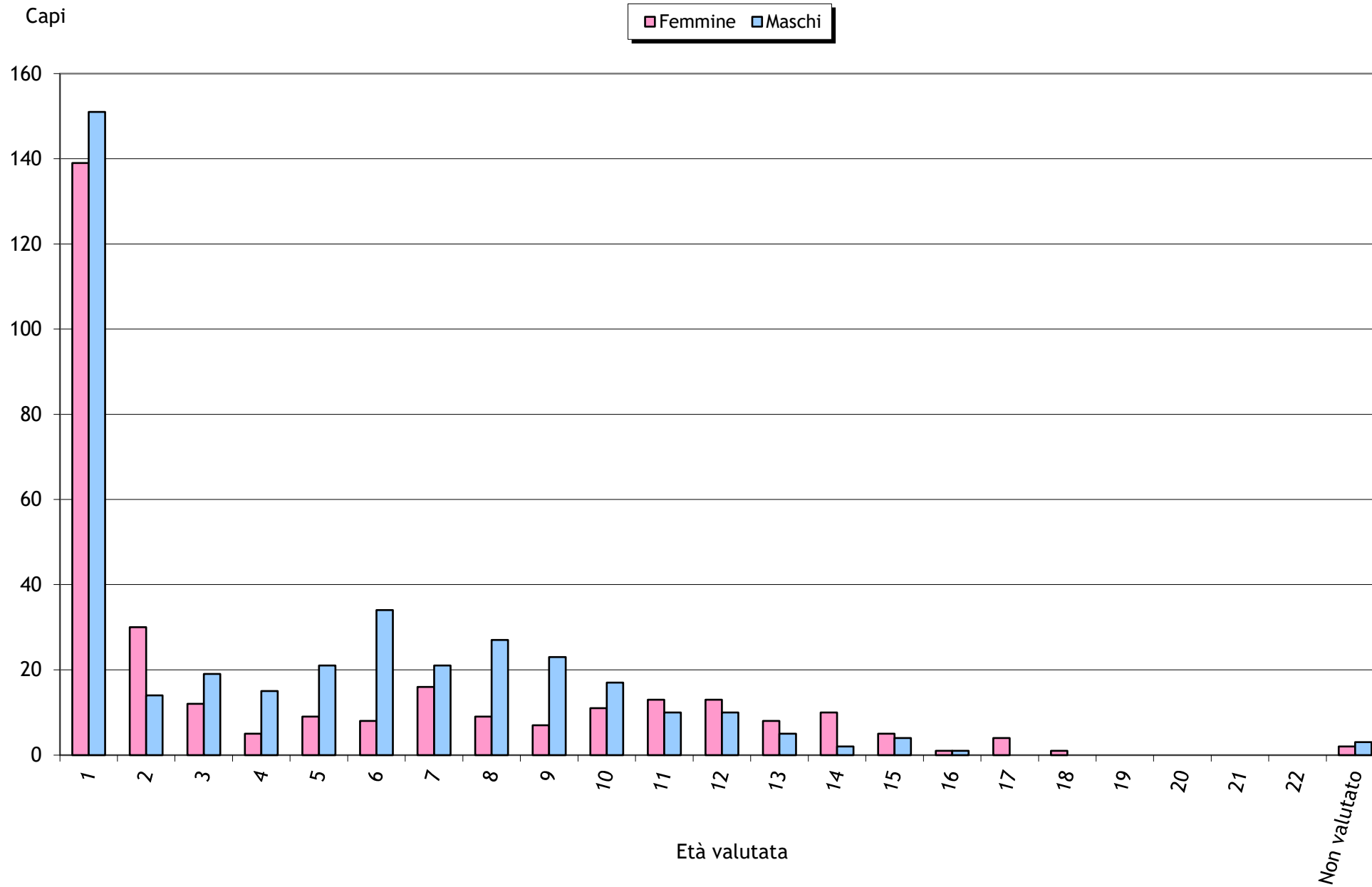
Anno

Vallagarina, alto Garda e Trento - Camoscio

periodo di caccia 16/08/21 - 15/12/21



Camoscio - Abbattimenti per età valutata



Riserva area faunistica e subarea	ASSEGNAZIONI										ABBATTIMENTI										
	Maschi			Femmine			Maschio o Femmina				Totale	Maschi				Femmine			Non Val.	Totale	
	III	II	I	III	II	I	III	I-III	I	III		II	I	Totale	III	II	I	Totale			
ALA ALA ALA	15	8	12	15	12	8					70	12	9	11	32	17	13	6	36		68
ALA BALDO BALDO			1	1							2			1	1						1
ALDENO BONDONE - STIVO VAL GOLA			1								1			1	1						1
ALDENO / NOMI BONDONE - STIVO DOSSO PAGANO	2	1	2	2	1	1					9	4	2	1	7		1	1	2		9
ARCO BONDONE - STIVO STIVO-TRE CIME	2	1	1	2	1	1					8	2	1	1	4	2	1		3		7
ARCO MISONE - CASALE MISONE-CASALE	2	1	1	3	1						8	4		2	6	1	1		2		8
AVIO BALDO BALDO	14	7	10	14	10	7					62	10	8	11	29	13	1	1	15	2	46
AVIO ALA ALA	3	1	3	3	3	2					15	1	1	1	3		1	2	3		6
BESENELLO - CALLIANO VIGOLANA VIGOLANA	7	3	6	7	5	4					32	5	3	6	14	8	5	2	15		29
BESENELLO - CALLIANO / VOLANO PASUBIO FINONCHIO	2	1	2	3	2	1					11	3	1	2	6	2	2		4		10
BRENTONICO / NAGO - TORBOLE BALDO BALDO	7	4	5	7	5	4					32	5	4	5	14	7	6		13	1	28
CALAVINO MISONE - CASALE MISONE-CASALE		1									1		1	1							1
CALAVINO / PADERGNONE / VEZZANO BONDONE - STIVO STIVO-TRE CIME	1		1	1							3					1		1	2		2
CAVEDINE BONDONE - STIVO STIVO-TRE CIME	3	1	3	3	2	1					13			7	7	2	2		4		11
CIMONE BONDONE - STIVO STIVO-TRE CIME	4	2	3	4	3	2					18	3	2	4	9	4	3	2	9		18
DRENA BONDONE - STIVO STIVO-TRE CIME	1		1								2	1		1	2						2
DRO MISONE - CASALE MISONE-CASALE	4	1	3	4	2	3					17	2	1	4	7	5	2	3	10		17
FAI DELLA PAGANELLA PAGANELLA FAUSIOR	1	1	2	2	1	1					8	1	1	2	4	2	1		3		7
FAI DELLA PAGANELLA PAGANELLA PAGANELLA	1		1	1	1						4	1			1	1		1	2		3
FOLGARIA VIGOLANA VIGOLANA	3	1	2	3	2	1					12	2	1	2	5	2	1		3		8
FOLGARIA PASUBIO FINONCHIO	1		1	1							3	1		1	2	1			1		3
FOLGARIA PASUBIO PASUBIO	1		1	1							3	1		1	2	1			1		3
FOLGARIA VIGOLANA VAL D'ASTICO	2	1	2	2	1	1					9	1	1	2	4	1	1	1	3		7
GARNIGA BONDONE - STIVO VAL GOLA	1		1	1	1						4	2		1	3			1	1		4
LASINO MISONE - CASALE MISONE-CASALE					1						1						1		1		1
LASINO BONDONE - STIVO STIVO-TRE CIME				1							1										
MALGA CAMPO BONDONE - STIVO STIVO-TRE CIME							1		1		2	1		1	2						2
MALGA VALLI VIGOLANA VIGOLANA	2	1	2	2	2	1					10	2	1	1	4	2	2	1	5		9

Riserva area faunistica e subarea	ASSEGNAZIONI									Totale	ABBATTIMENTI							Totale		
	Maschi			Femmine			Maschio o Femmina				Maschi				Femmine				Non Val.	
	III	II	I	III	II	I	III	I-III	I	III	II	I	Totale	III	II	I	Totale			
MEZZOLOMBARDO PAGANELLA FAUSIOR	2	1	2	1	1	1				8	1	1	1	3	1	2	3		6	
MORI - PANNONE BONDONE - STIVO STIVO-TRE CIME	1									1	1		1						1	
POMAROLO BONDONE - STIVO DOSSO PAGANO			1	1						2	1		1						1	
RIVA LEDRO LEDRO	1					1				2		1	1	1			1		2	
RIVA CADRIA - ALTISSIMO ROCCHETTA	1		1	1						3	1		2	1			1		3	
RIVA CADRIA - ALTISSIMO CADRIA-ALTISSIMO NORD-ORIENTALE	2	1	1	1	1	1				7	2		4			2	2		6	
RONZO - CHIENIS BONDONE - STIVO STIVO-TRE CIME	1	1	1	1	1	1				6	2	1	1	4		2	2		6	
ROVERETO ALA ALA	2	1	2	3	2	1				11	1	2	3	6	3	2	5		11	
ROVERETO PASUBIO FINONCHIO	2	1	2	2	1	1				9	1	1	3	5	2	1	3		8	
TENNO CADRIA - ALTISSIMO CADRIA-ALTISSIMO NORD-ORIENTALE	3	2	2	3	2	2				14		3	3	6	3	2	2	7	13	
TENNO MISONE - CASALE MISONE-CASALE	3	1	1	3	1	1				10	5		2	7	1	1	1	3	10	
TERLAGO PAGANELLA PAGANELLA	9	3	6	9	7	4				38	13	1	8	22	4	7	2	13	1	36
TERRAGNOLO PASUBIO FINONCHIO	2	1	2	2	1	1				9	2		1	3	2	1	1	4	1	8
TERRAGNOLO PASUBIO PASUBIO	6	3	6	6	5	4				30	5	1	7	13	7	5	4	16		29
TRAMBILENO PASUBIO PASUBIO	10	5	10	10	8	6				49	11	4	11	26	8	6	6	20		46
TRENTO EST VIGOLANA MARZOLA	1		1	1						3		2		2	1			1		3
TRENTO OVEST BONDONE - STIVO VAL GOLA	3	1	2	3	1	1				11	3	1	2	6	2	1	1	4		10
TRENTO OVEST PAGANELLA PAGANELLA	2		1	1	1	1				6	2		1	3	1			1		4
TRENTO SUD BONDONE - STIVO VAL GOLA	2	1	1	2	2	1				9	2	1	1	4	2	2		4		8
TRENTO SUD VIGOLANA VIGOLANA	2	1	2	2	1	1				9	2		3	5	2	1		3		8
VALLARSA ALA ALA	8	4	6	8	6	4				36	2	2	7	11	7	7	3	17		28
VALLARSA PASUBIO PASUBIO	11	5	11	11	10	6				54	14	5	11	30	5	9	6	20		50
VEZZANO PAGANELLA PAGANELLA	10	4	7	10	7	4				42	11	3	8	22	9	7	4	20		42
VILLALAGARINA BONDONE - STIVO STIVO-TRE CIME	4	2	3	4	3	2				18	4	2	3	9	1	4	1	6		15
ZAMBANA PAGANELLA PAGANELLA	4	1	3	3	2	2				15	3		5	8	4	3		7		15
Totale	171	75	141	171	119	84	1	1	1	763	151	69	154	374	139	107	55	301	5	680

FEMMINA

Numero di capi con relativo peso medio per età valutata

riserva, area faunistica, subarea	Picc.	1	2	3	4	5	6	7	8	9	10	11	12	13	14	15	16	17	18	19	20	21	22	23	24	25	NV	Tot.
ALA ALA ALA		17 12,0	4 15,3	2 15,5				3 19,3	4 17,0			3 15,1	3 18,5															36 14,5
ALDENO / NOMI BONDONE - STIVO DOSSO PAGANO				1 23,0									1 27,0															2 25,0
ARCO MISONE - CASALE MISONE-CASALE		1 14,0	1 16,0																									2 15,0
ARCO BONDONE - STIVO STIVO-TRE CIME		2 13,0									1 19,0																	3 15,0
AVIO ALA ALA											1 21,0	1 16,0				1 18,0												3 18,3
AVIO BALDO BALDO		13 12,8					1 18,0				1 20,0															1	16 13,6	
BESENELLO - CALLIANO VIGOLANA VIGOLANA		8 11,3	1 12,0							3 14,7	1 15,0	1 18,2	1 16,4															15 13,0
BESENELLO - CALLIANO / VOLANO PASUBIO FINONCHIO		2 13,0					1 20,0		1 23,0																			4 17,3
BRENTONICO / NAGO - TORBOLE BALDO BALDO		7 16,6		1 22,0	2 21,0		2 22,5			1 18,0																1 20,0	14 18,8	
CALAVINO / PADERGNONE / VEZZANO BONDONE - STIVO STIVO-TRE CIME		1 15,0														1 20,0												2 17,5
CAVEDINE BONDONE - STIVO STIVO-TRE CIME		2 14,5			1 22,0						1 24,0																	4 18,8
CIMONE BONDONE - STIVO STIVO-TRE CIME		4 14,9	1 22,0	2 22,0								1 23,0	1 18,0															9 18,5
DRO MISONE - CASALE MISONE-CASALE		5 12,1		1 17,0						1 17,0						2 17,0	1 20,0											10 14,9
FAI DELLA PAGANELLA PAGANELLA FAUSIOR		2 12,5							1 18,0																			3 14,3
FAI DELLA PAGANELLA PAGANELLA PAGANELLA		1 11,5											1 15,5															2 13,5
FOLGARIA PASUBIO FINONCHIO		1 13,0																										1 13,0
FOLGARIA VIGOLANA VAL D'ASTICO		1 14,0	1 13,5													1 18,0												3 15,2
FOLGARIA PASUBIO PASUBIO		1 17,0																										1 17,0
FOLGARIA VIGOLANA VIGOLANA		2 12,3	1 20,0																									3 14,8
GARNIGA BONDONE - STIVO VAL GOLA																									1 22,0		1 22,0	
LASINO MISONE - CASALE MISONE-CASALE			1 18,5																									1 18,5
MALGA VALLI VIGOLANA VIGOLANA		2 12,0				1 16,0	1 17,0									1 17,0												5 15,5
MEZZOLOMBARDO PAGANELLA FAUSIOR		1 11,0	1 15,0					1 15,6																				3 13,9

FEMMINA

Numero di capi con relativo peso medio per età valutata

riserva, area faunistica, subarea	Picc.	1	2	3	4	5	6	7	8	9	10	11	12	13	14	15	16	17	18	19	20	21	22	23	24	25	NV	Tot.	
RIVA CADRIA - ALTISSIMO CADRIA-ALTISSIMO NORD-ORIENTALE													1 18,5		1 19,0													2 18,8	
RIVA CADRIA - ALTISSIMO ROCCHETTA		1 13,5																										1 13,5	
RIVA LEDRO LEDRO		1 10,0																										1 10,0	
RONZO - CHIENIS BONDONE - STIVO STIVO-TRE CIME							1 21,0			1 23,0																		2 22,0	
ROVERETO PASUBIO FINONCHIO		2 15,0				1 26,0																						3 18,7	
ROVERETO ALA ALA		3 12,8					1 25,0		1 20,0																			5 16,7	
TENNO CADRIA - ALTISSIMO CADRIA-ALTISSIMO NORD-ORIENTALE		3 13,0	1 17,0								1 21,0		1 17,5		1 21,5													7 16,6	
TENNO MISONE - CASALE MISONE-CASALE		1 16,5	1 16,0																1 18,0									3 16,8	
TERLAGO PAGANELLA PAGANELLA		4 12,5	2 16,8	1 17,0	1 25,0	1 18,0		1 20,0	1 20,0			1 15,0														1 17,0	13 16,6		
TERRAGNOLO PASUBIO FINONCHIO		2 11,5	1 20,0																									4 15,5	
TERRAGNOLO PASUBIO PASUBIO		7 13,6	2 13,0						1 21,0		2 21,5	1 21,0			2 22,0	1 19,0												16 16,8	
TRAMBILENO PASUBIO PASUBIO		8 14,0	3 17,5		1 20,0	1 21,0		1 19,0				3 16,7			1 17,0	1 15,0		1 16,5										20 16,2	
TRENTO EST VIGOLANA MARZOLA		1 16,5																										1 16,5	
TRENTO OVEST BONDONE - STIVO VAL GOLA		2 12,5	1 15,5														1 15,0											4 13,9	
TRENTO OVEST PAGANELLA PAGANELLA		1 15,5																										1 15,5	
TRENTO SUD BONDONE - STIVO VAL GOLA		2 14,0					1 19,0		1 19,0																			4 16,5	
TRENTO SUD VIGOLANA VIGOLANA		2 12,5				1 19,5																						3 14,8	
VALLARSA ALA ALA		7 12,6	2 18,8				1 22,0	2 19,6	1 14,5	1 18,5			1 21,5	1 16,0		1 17,7												17 16,2	
VALLARSA PASUBIO PASUBIO		5 10,3	3 13,5	2 15,3		1 18,2		2 14,4			1 15,0	1 18,0	1 16,0	1 16,0			1 16,0	2 15,9										20 14,1	
VEZZANO PAGANELLA PAGANELLA		9 14,1	2 19,0	1 17,0	1 18,0	1 19,0		1 17,5			1 22,0		2 22,0	2 18,0														20 16,9	
VILLALAGARINA BONDONE - STIVO STIVO-TRE CIME		1 10,0	1 16,0			1 20,5	1 19,0	1 20,0							1 19,0													6 17,4	
ZAMBANA PAGANELLA PAGANELLA		4 16,3		1 16,0			1 19,0					1 19,9																7 17,1	
Numero totale		139	30	12	5	9	8	16	9	7	11	13	13	8	10	5	1	4	1								2	303	
Peso medio totale		13,1	16,3	18,1	20,9	20,1	20,3	18,9	17,7	17,9	19,8	17,4	19,2	17,0	19,8	17,7	16,0	16,6	17,0									20,0	15,9

MASCHIO

Numero di capi con relativo peso medio per età valutata

riserva, area faunistica, subarea	Picc.	1	2	3	4	5	6	7	8	9	10	11	12	13	14	15	16	17	18	19	20	21	22	23	24	25	NV	Tot.
ALA		12		6	2	1	1	2	5	2			1															32
ALA ALA		13,3		20,1	22,3	25,0	23,0	20,5	23,6	20,5			20,0															18,5
ALA									1																			1
BALDO BALDO									22,0																			22,0
ALDENO								1																				1
BONDONE - STIVO VAL GOLA								27,0																				27,0
ALDENO / NOMI		4	1			1	1																					7
BONDONE - STIVO DOSSO PAGANO		15,3	30,0			30,0	30,0																					21,6
ARCO		4					1			1																		6
MISONE - CASALE MISONE-CASALE		15,3					29,5			35,0																		21,0
ARCO		2				1						1																4
BONDONE - STIVO STIVO-TRE CIME		14,5									26,0																	18,3
AVIO		10		3	4	1	1	4	1	1	2	1				1										1	30	
BALDO BALDO		15,0		23,7	25,9	29,0	30,0	29,0	27,0	26,0	24,0	19,0				25,0											14,0	21,9
AVIO		1				1			1																			3
ALA ALA		9,8				25,0			28,0																			20,9
BESENELLO - CALLIANO		5	1		1	1	1	1	2	1					1													14
VIGOLANA VIGOLANA		11,9	18,0		18,3	19,0	16,2	21,0	25,0	23,1					20,7													17,6
BESENELLO - CALLIANO / VOLANO		3	1										1	1														6
PASUBIO FINONCHIO		12,3	17,0									30,0	20,0															17,3
BRENTONICO / NAGO - TORBOLE		5	1	1	1	1		1	3	1																		14
BALDO BALDO		15,6	22,5	35,0	32,0	33,0		34,0	31,0	30,0																		25,5
CALAVINO			1																									1
MISONE - CASALE MISONE-CASALE			14,0																									14,0
CAVEDINE							3	2	1	1																		7
BONDONE - STIVO STIVO-TRE CIME							29,0	25,5	27,0	32,0																		28,1
CIMONE		3		1		1	2		2																			9
BONDONE - STIVO STIVO-TRE CIME		16,7		28,0		27,0	26,0		28,0																			23,7
DRENA		1				1																						2
BONDONE - STIVO STIVO-TRE CIME		15,0				31,0																						23,0
DRO		2		1		2			1	1																		7
MISONE - CASALE MISONE-CASALE		14,5		10,5		21,5			32,0	20,5																		19,3
FAI DELLA PAGANELLA		1			1				1						1													4
PAGANELLA FAUSIOR		12,0		25,0					24,0						28,0													22,3
FAI DELLA PAGANELLA		1																										1
PAGANELLA PAGANELLA		16,0																										16,0
FOLGARIA		2				1					2																	5
VIGOLANA VIGOLANA		12,0				22,0					22,0																	18,0
FOLGARIA		1					1																					2
PASUBIO PASUBIO							28,0																					28,0
FOLGARIA		1							1																			2
PASUBIO FINONCHIO		14,0							30,0																			22,0
FOLGARIA		1				1	1		1																			4
VIGOLANA VAL D'ASTICO		15,6				24,0	28,0		26,0																			23,4
GARNIGA		2														1												3
BONDONE - STIVO VAL GOLA		11,5														25,0												16,0

MASCHIO

Numero di capi con relativo peso medio per età valutata

riserva, area faunistica, subarea	Picc.	1	2	3	4	5	6	7	8	9	10	11	12	13	14	15	16	17	18	19	20	21	22	23	24	25	NV	Tot.	
MALGA CAMPO		1						1																				2	
BONDONE - STIVO STIVO-TRE CIME	13,0							21,0																				17,0	
MALGA VALLI		2			1							1																4	
VIGOLANA VIGOLANA	13,9											28,8																18,8	
MEZZOLOMBARDO		1																										3	
PAGANELLA FAUSIOR	15,0							23,0	21,0																			19,7	
MORI - PANNONE					1																							1	
BONDONE - STIVO STIVO-TRE CIME					28,0																							28,0	
POMAROLO																												1	
BONDONE - STIVO DOSSO PAGANO								30,0																				30,0	
RIVA		2																										4	
CADRIA - ALTISSIMO CADRIA-ALTISSIMO NORD-ORIENTALE	13,0								29,5			1																18,5	
RIVA																												1	
LEDRO LEDRO								27,0																				27,0	
RIVA		1																										2	
CADRIA - ALTISSIMO ROCCHETTA	10,0								29,0																			19,5	
RONZO - CHIENIS		2																										4	
BONDONE - STIVO STIVO-TRE CIME	20,5							38,0				1																26,0	
ROVERETO		1			1				1		1																	5	
PASUBIO FINONCHIO	14,0				23,0				21,0	34,0																		24,4	
ROVERETO		1	1	1																								6	
ALA ALA	12,0	17,0	18,5									25,0	27,0															20,9	
TENNO		5																										7	
MISONE - CASALE MISONE-CASALE	13,5							24,0																				17,4	
TENNO			1	1	1			1	1	1																		6	
CADRIA - ALTISSIMO CADRIA-ALTISSIMO NORD-ORIENTALE			25,0	22,0	22,0			24,0	25,0	30,0																		24,7	
TERLAGO		13	1					1	1	1	2																1	23	
PAGANELLA PAGANELLA	14,1	19,0						23,0	23,5	22,5	25,5																	16,5	18,2
TERRAGNOLO		5	1					2		2		2	1															13	
PASUBIO PASUBIO	12,2	16,0						21,5	21,0		21,5	24,0																17,6	
TERRAGNOLO		2										1															1	4	
PASUBIO FINONCHIO	15,3								24,0																			18,2	
TRAMBILENO		11	2				2	1	1	2	3	1	1	1														26	
PASUBIO PASUBIO	13,7	17,3					28,3	28,0	25,0	24,0	23,2	30,4	27,5	25,5														20,0	
TRENTO EST			1		1																							2	
VIGOLANA MARZOLA			22,0		26,0																							24,0	
TRENTO OVEST		3	1								2																	6	
BONDONE - STIVO VAL GOLA	13,0	20,0								27,5																		19,0	
TRENTO OVEST		2																										3	
PAGANELLA PAGANELLA	12,0																											13,0	
TRENTO SUD		2																										5	
VIGOLANA VIGOLANA	15,0							22,0					17,5	19,0														17,7	
TRENTO SUD		2		1																								4	
BONDONE - STIVO VAL GOLA	17,5		21,5							21,0																		19,4	
VALLARSA		14			1	4	1	1	1	3	1	2																30	
PASUBIO PASUBIO	12,7				23,8	20,3	21,5	16,5	16,0	22,5	19,0	19,0																16,7	

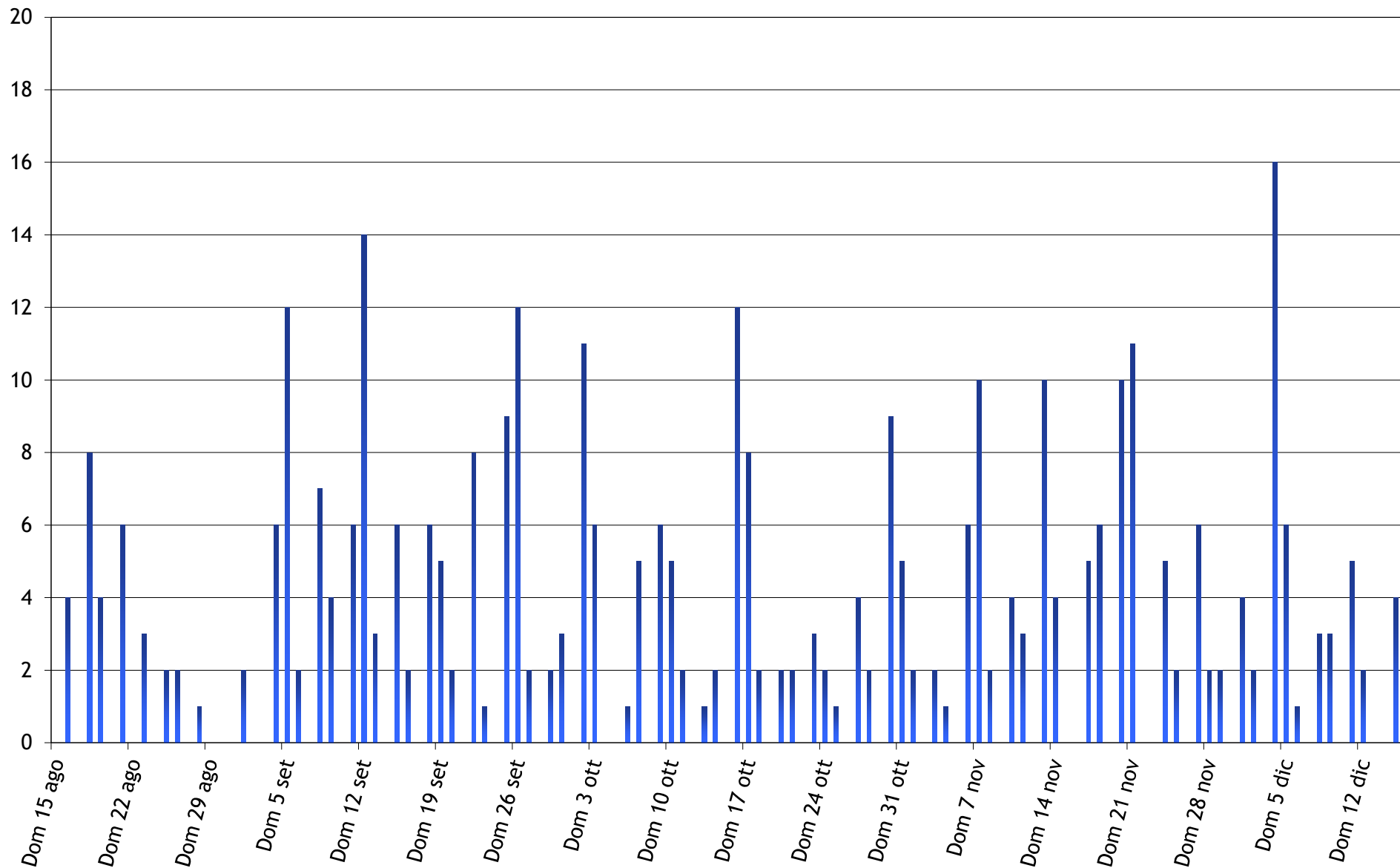
MASCHIO

Numero di capi con relativo peso medio per età valutata

riserva, area faunistica, subarea	Picc.	1	2	3	4	5	6	7	8	9	10	11	12	13	14	15	16	17	18	19	20	21	22	23	24	25	NV	Tot.	
VALLARSA		2		2			4		1	1				1														11	
ALA ALA		13,5		18,5			25,4		26,0	18,5				19,0														20,8	
VEZZANO		11	1	1		1	2	1			3		1				1											22	
PAGANELLA PAGANELLA		13,8	20,0	19,0		23,0	27,0	27,0			21,7		27,0				24,0											18,7	
VILLALAGARINA		4		1		1	1			1			1															9	
BONDONE - STIVO STIVO-TRE CIME		13,1		23,0		28,0	29,0			22,0			25,0															19,9	
ZAMBANA		3					2	1	1				1															8	
PAGANELLA PAGANELLA		12,3					25,8	25,0	24,0				18,5															19,5	
Numero totale		151	14	19	15	21	34	21	27	23	17	10	10	5	2	4	1										3	377	
Peso medio totale		13,8	19,6	21,4	24,7	25,7	25,5	25,1	25,4	25,6	23,1	22,7	23,4	25,0	22,2	24,8	24,0											15,3	20,0

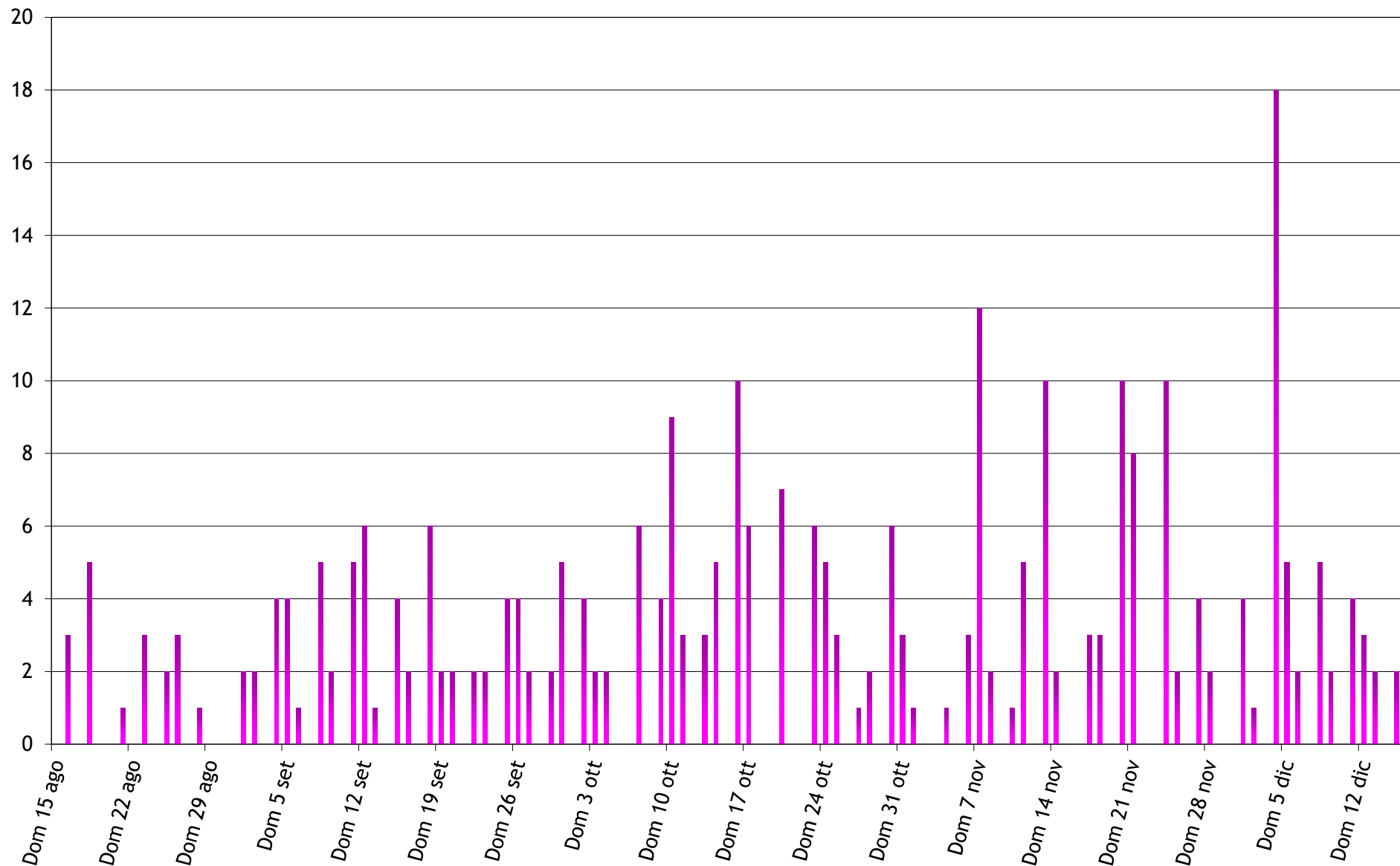
Camoscio - Abbattimenti maschi per data

Capi

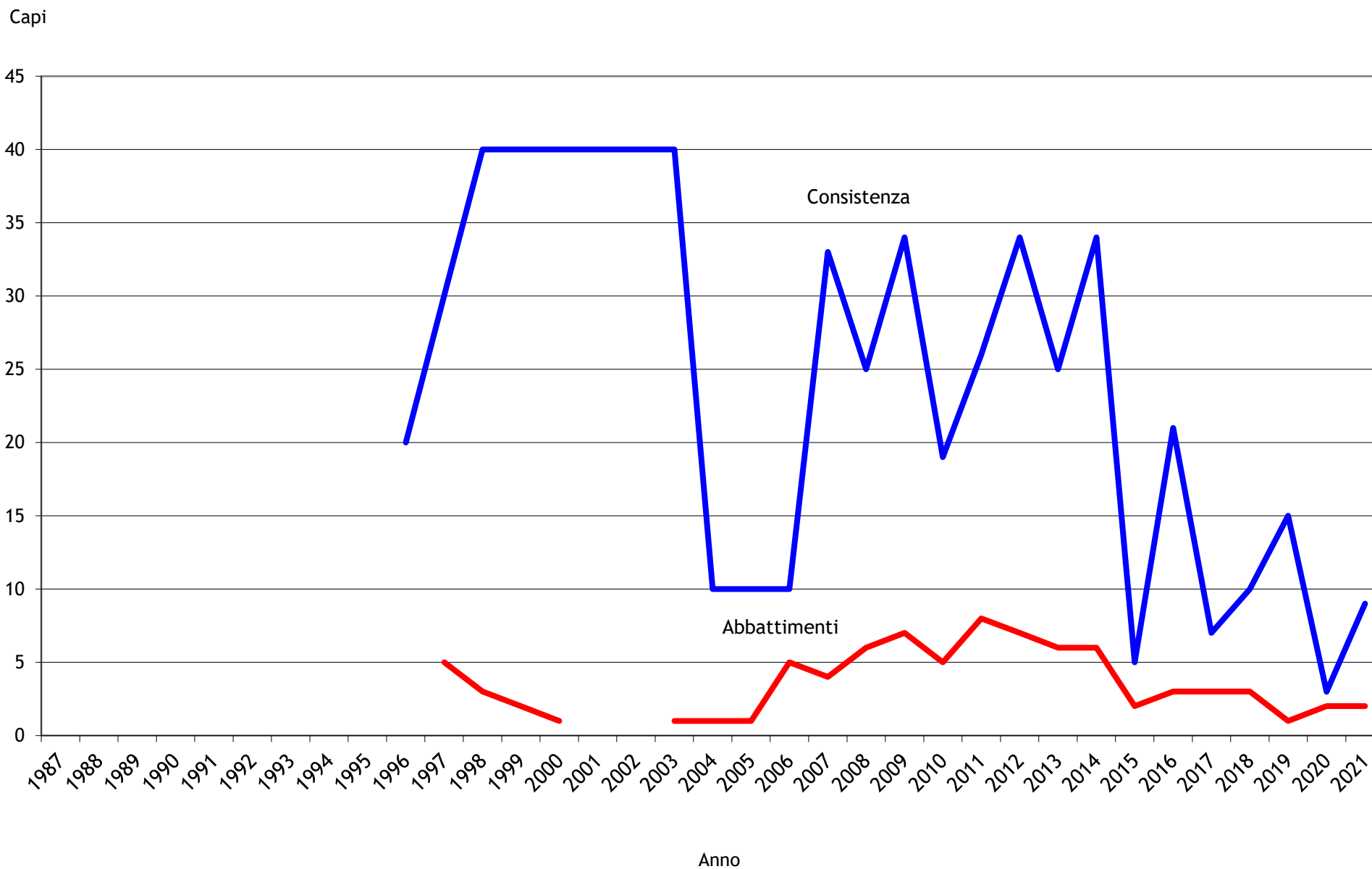


Camoscio - Abbattimenti femmine per data

Capi



Muflore - Consistenza e abbattimenti dal 1987



Riserva	ASSEGNAZIONI							ABBATTIMENTI										
	Maschi			Femmine	Piccoli	Femmine o piccoli generico	generico	Totale	Maschi				Femmine		Piccoli	Non Val.	Totale	
	II	I	Totale						II	I	Totale	Età Media I [^]	Totale	Età Media				
RIVA			0	1	1			3						1	3,0	1		2
Totale			0	1	1			3						1	3,0	1		2